



**BURLINGTON  
HANDWEAVERS  
& SPINNERS  
GUILD**

**Happy New Year!**



# Warped Perspective

Issue 20

January 2009

## President's Message:



I'm writing this message the Friday before Christmas, looking out at a major snowstorm. The snow has been falling for a couple of hours now. It's white and pretty out there, but I'm glad I can spend the day at home! It's a time to reflect on the past year, and to look forward to a new one.

For the guild, the past year was a celebration of 50 years. Highlights included a beautiful juried show, 3 guest speakers delivering inspiring talks at our Luncheon and Lecture series, and a busy studio with classes, study group, and the growing groups for our open studio on Wednesday and Thursday afternoons.

Personally, it's been a year without a lot of weaving. A wonderful 3 weeks in NL started my summer, followed by lots of local day sailing. The planned 3 week trip on the boat was shortened to 1 week with a cell phone call while sitting in a restaurant - could I start work in Ottawa in a week? Much as I love my job with Elections Canada, it's long hours, away from home for several weeks, and at times, high stress. Next time, I hope to take my little loom with me.

### **Dates to Remember!**

**Jan. 5/09** - Tips, tricks, special tools, favourite gismos, or problems for weaving, spinning, felting, beading, basketry. Lois Wyndham has volunteered to be the scribe.

**Feb. 2/09** - Annual Auction with Bonnie Sylvia

**Mar. 2/09** - Ixchel Suarez - textile artist - tapestries

**April 6/09** - TBA

**May 4/09** - TBA

**June 1/09** - Pot Luck

### **Special Dates:**

**May 1-3, 2009** - 2009 OHS Conference: "Fibre Unleashed": "Pushing the Limits" to be held at the Nottawasaga Inn near Alliston.

**June 12-14, 2009** - Ontario Handspinning Seminar in Queen's University, Kingston Ontario. Warm, Winsome, Wacky, Wilful, Wearable, Wonderful **WOOL. Back to Wool – Lace to Lopi!**

<http://www.ohs.on.ca/>

**April 17-19, 2009** - **Kaleidoscope** - Weave up a storm for the sale, please!

**Meetings General:** 7:15 pm, the first Monday of Oct., Nov., Jan., Feb., Mar., Apr., May. Dec. and June meetings start at 6:30 pm. Sept. meeting on the second Monday. No meetings in July and August. Wednesday group and Thursday group meet at 12:30 pm each week.

**Burlington Handweavers & Spinners Guild**  
1333 Lakeshore Road, Burlington, ON L7S 1A9  
Phone: 905-632-7796

<http://www.weavingworld.ca/bwg.htm>

What's coming in 2009?

- ◆ We have a full class (and a waiting list) for the spring linen workshop.
- ◆ In June, we'll be sponsoring an exciting show by the Artwear Network.
- ◆ We'll be deciding on the theme for our 2010 juried show.
- ◆ Arts Burlington is working with the BAC to plan an all guild curated show in the AIC gallery for the summer of 2010. The tentative challenge to artists is to create something inspired by "Earth and Fire" - a selection of pieces in the BAC permanent collection that traveled to Japan for an exhibition. A full colour catalogue from that show will be available in the studio - after just a brief flip through it, I have several ideas running! Those last 2 events mean 2009 should be a time for each of us to design and to start work on entries for 2 shows.

My big project for 2009 is to houseclean, paint, and reorganize my studio. While that is in progress, I'll be weaving on the little loom that lives in the dining room. My goal is to weave or work with fibre in some way every single day.

What are your fibery plans??

*Joyce Newman* - President

## More Dates To Remember:

### The Battleground Project Includes: through Jan. 27, 2009

Battleground: War Rugs from Afghanistan - Patches: Military Uniform Insignia, and The Kandahar Journals of Richard Johnson. At the Textile Museum of Canada, Toronto. 416-599-5321

[www.textilemuseum.ca](http://www.textilemuseum.ca)

**March meeting (don't miss!): Ixchel Suarez** - "My tapestries and batiks have been full of symbolism and reflects my background and history. My moment in time and place. My fascination for bright colours and textures, and the abstract simplicity of shapes has guided my work through out these 25 years of working with fibres. My greatest influences are the nature, music, photography, textures, and the Maya Culture. They all have been in a way my inseparable friends and inspiration."

<http://ixchelsuarez.com/home.html>

## Member News:

**Combined Guild Show:** Summer of 2010: inspired by pieces in the catalogue of selected works from show of selected works from the BAC collection that went to Itibashi a few years ago. Still working on guidelines, next meeting will be Jan. 15.

Works can be seen at:

[http://www.virtualmuseum.ca/Exhibitions/Fire\\_Earth/en/main.html](http://www.virtualmuseum.ca/Exhibitions/Fire_Earth/en/main.html)

George Wale may offer a session on finding inspiration.

### Volunteer Protocol:

New agreement to be signed to start in 2009, requiring 10 hours per year from each guild member, but it will include guild hours as well as BAC hours.

### Ontario Handweavers and Spinners Conference -

**May 1-3/09** at Nottawasaga Inn, Alliston – *Fibre Unleashed: Pushing the Limits* – Early bird registration (Jan. 15/09) savings of \$25. Extra forms available in the textile studio.

**Guild Auction: Feb. '09:** You can start bringing your items for the auction into the studio – place them in the dye kitchen, clearly labeled.

**The guild has received a donation** of two filing cabinets and two tables from *Redbourne Realty Advisors Inc*, through *Ruth Thoem*. The antique spinning wheel will have a new home on the top of the tables. The guild will make a donation to *Habitat for Humanity* through Redbourne Realty in appreciation for the donation.

**!Local News!** It has come to my attention that *Pat Hood's* daughter has had a brand new New Year's baby! The first of the year in Oakville. *Pat, Brian*, enjoy your Grandbaby!

## Study Group:

The Guild study group met once a month this fall and we continued our study of Colour and Weave. Colour and Weave is not a structure or a weave, but rather a use of colour in weaving. Various combinations of dark (D) and light (L) threads are used in both warp and weft to create patterns. The weave used can be plain weave,

**Designer Crafts - Nov. 7/08:** Juried show at the Carnegie Gallery – The guild provided the **Textile Award**. *Lucy Slykerman* received this award – congratulations!!

**Program in the December meeting** was presented by *Lois & John Wyndham* "Lazing down the River" a slide show of a canal cruise in France by *Lois & John, Marian & Greg Riach, Lesley & Peter French and Margaret Jane Wallace*. Thank you all very much!

The *Camelot Centre* is very appreciative of the charitable donations received from our guild members. Over the past three years attendance has grown to 31 full time Participants. Thank you so much!!

*Bonnie Sylvia*

**A draft copy of the updated constitution** was sent out with the guild meeting reminder. A vote on the proposed changes will be held at the Jan. 5 '09 meeting.

*Lois Wyndham*

**A huge thank you** to the 50<sup>th</sup> Anniversary Committee for all their hard work in making our celebrations such a great success!! Also, a thank you to all those who support the special events!!

*Eleanor Roberts*

(ed. - thank you Eleanor for all your hard work!)

**Christmas Sale** - a very successful sale. Thank you all for your participation, your sale items, and your help. (ed. - no pictures - sorry!)

## Golden Shuttle Award:

This years' recipients – two very special guild members, *Doreen Winter* and *Freda Veitch*. They are both recognized for their work on this years' 50<sup>th</sup> anniversary committee, and for all their support of our guild over past years. Congratulations!

twill, or other structure. A third colour can also be added.

Some well known examples of Colour and Weave are log cabin, houndstooth and pinwheels. In log cabin the warp is threaded D/L for a block and then L/D for the next block. The weft order is the same, it is woven in plain weave, and the log cabin effect looks like ribbons

weaving in and out. Eleanor Roberts had tea towels in the Christmas Sale, which included log cabin – they were lovely. Houndstooth and pinwheels are done on a twill threading and achieved by threading 4D 4L and weaving in a 2/2 twill also using 4D 4L.

Some other derivatives of Colour and Weave are shadow weave and overshot doubleweave. We have found there is much to experiment with because of the possible threadings and the many combinations of D/L which can be used. If you thread your loom 1-2-3-4 you can weave both twill and plain weave items. D/L ratios can be D/L, DD/LL, DDD/LLL, 4D 4L, DD/L, LL/D – you name it. Ratios in warp and weft can differ all making for interesting patterns.

We also learned how to turn a simple design (e.g. Greek key or squares) into a weavable draft using Colour and Weave for which we did some old fashioned pencil and graph paper exercises. We have all learned a lot – and are still learning. Come and join us – you can pick up wherever you like and explore whatever aspect of Colour and Weave intrigues you.

Study Group meets the second Monday of each month at 7:30 in the Textile Studio. Next meeting will be January 12, 2009. Please join us.

by *Diane Woods*



### Our November - December Window:

Another great Window Display *Lesley French* and *Marg Burns!* Thank you!

### Perry Gallery Show for 2009:

In the years when the Guild doesn't hold a Juried Show, we are still responsible for mounting a show in the Perry Gallery in the June time slot. This year we received three good proposals from individuals and a group to mount a show. We accepted the proposal from a group called ArtWear Network. This group of eight fabric artists incorporates weaving, dyeing, felting, embroidery, surface treatments and knitting in their wonderful items of clothing. Their show will be called "*Solstice*", and the items they create will reflect the solstice and change of seasons.

The artists in the group are *Lucy Slykerman* (Guild member), *Pat Burns-Wendland* (juror of our Juried Show last June), *Helena Frei*, *Bonnie Glass*, *Maureen Harding*, *Josette Luyckx*, *Marie Payne* (of Yarns Plus), and *Reet Triefeldt*.

We are looking forward to seeing the exciting show they will put together for us. Fortunately for all involved, Brad Isaacs of the Burlington Art Centre will be responsible for hanging the show.

The show will run from May 30 to June 28, 2009. The opening will

be Sunday, May 31 at 2 pm – be sure to mark that date on your 2009 calendar as all Guild members should be there to support this Guild sponsored show.

by *Diane Woods*



### Words from the Library:

Another year is starting and once the budget for 2009 has been struck, the library will be looking for suggestions for new books to acquire. If you do have something to suggest, please put the information down on the bright yellow form hanging on the corkboard. I see that we have two already listed...check them out and add your own! Remember that our standards allow for many expressions in fibre...is there a lack of resource material for any of these?

We have many interesting print and visual resources in the library. If you are of a philosophic bent some day, you might like to look through some of the back issues of "Loom Music" which are perhaps best described as archives of weaving about 40 years ago. These were

home published and in themselves witness an impressive effort to develop and maintain a weavers community across Canada. We also have many monographs on different techniques and structures and although they may not have 'flashy' pictures, the information is presented clearly by authors who really knew their stuff.

We subscribe to a variety of publications and I encourage all of us to look beyond our 'prime' activity and seek out what the other half of the handspinners and weavers are reading. Whatever the magazine, it is filled with articles, pictures, and ads that can serve as inspiration or lead to new insights and interests.

For example, did you know we subscribe to *Spinners Quarterly*? The little newsletters are kept in a binder in the bookcase by the kitchen. I've just finished reading

the latest for Dec. 2008. *Lorraine Smith* has an interesting editorial reflecting on the stress we all feel but comments “I find if I spend time with the little things or rather with these enormously fabulous things disguised as little things the big problems ease up a bit”. These words had great resonance with me, just trying to get through the Christmas preparations and perhaps you would find the editorial warming as well. Also contained within is an interesting article on dyeing, spinning, managing colour, and knitting a pair of “*Handwarmer Mitts*”. For the needle felters there is a description on how to make a Snollie ball.... really a needlefelted toy worked over a tennis ball or alternatively a soft rattle. Could we use the same technique to make tree decorations or catnip toys for sale?



project from *Spinner’s Quarterly*. We have a lot of knitters in the guild, but we can only sell items made of handspun. Eleanor mentioned to me she had seen a great idea of little stockings knit up as tree decorations. Sharon has links to resources for miniature sweaters. Is there a way we can bring our abilities and ideas together? If spinners were willing to spin up some plain white in small amounts, would others be willing to dye with cake decorating dyes (or others) so there would be an amazing colour palette available to knitters who wanted to play with colour and create “smalls” for the Christmas sale? Could this be the advent of a new guild initiative? What do you think about this...is it practicable, fun, creative and unifying? The editors of the newsletter would like some feedback from YOU, so send an email to Ruthe Stowe, Ruth Thoem, or Jennifer with your ideas...please.

by *Jennifer Earle*

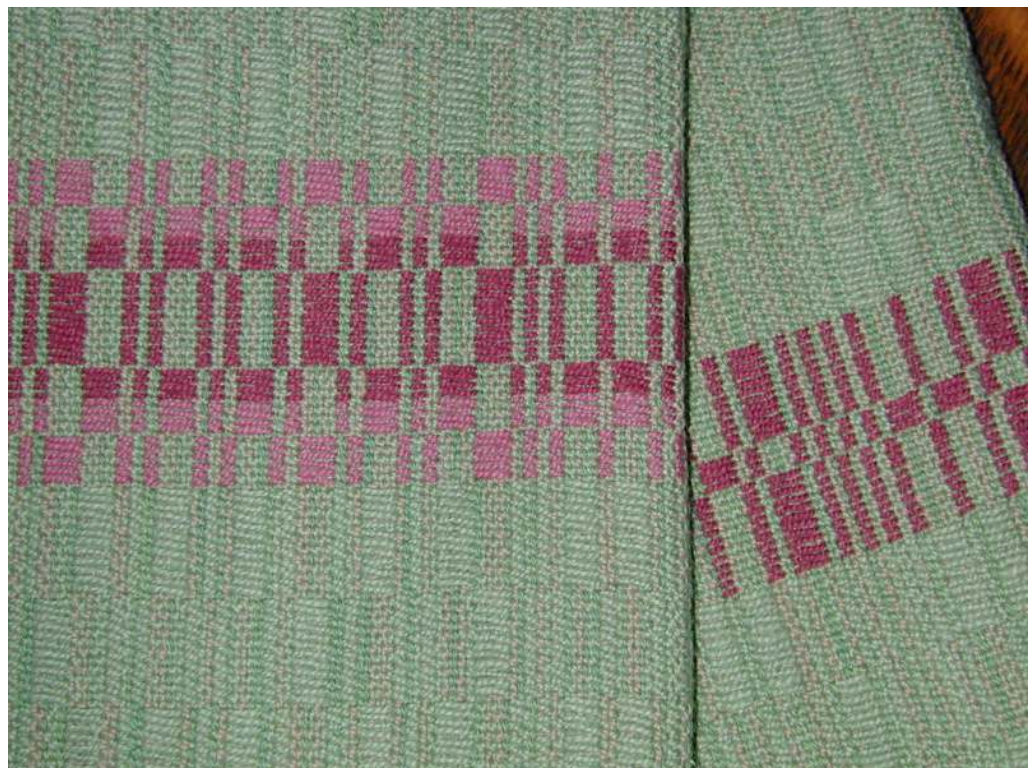
**The Bar Code As Inspiration:**

The first source of inspiration for my most recent batch of towels was Barbara Reid’s Monk’s Belt tea towels. I like the way Barbara had combined colours, using the base and varying the weft floats. Lots of opportunity for colour experimentation. I wove a few towels in mostly plain weave, with Monk’s Belt borders along the ends. One set in particular, dark stripes against a white tabby, made me think of bar codes, or UPC codes. A modern day version of name drafts, I thought.

A little bit of Googling, and here is what I learned: In 1973 the grocery store industry adopted the UPC as a standard product identity mark. There are many variations, but the standard has 12 digits. The first digit represents the type of product (0 for grocery, 3 for drugs, etc). The next 5 digits are the manufacturer’s code. The next five digits identify the particular item, and the final digit serves as a check code. Each digit is represented by a series of spaces and bars within a space 7 modules wide. Bar and space width vary as 1, 2, 3, or 4 units wide, resulting in 20 possible bar-space combinations.

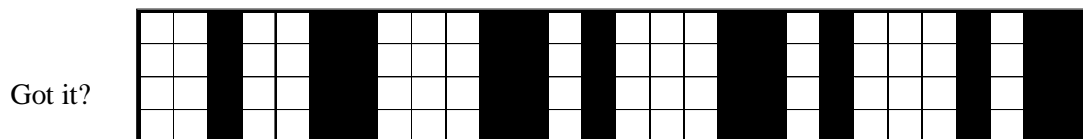
I trust the accompanying diagram helps.

	S B S B
0	3 2 1 1
1	2 2 2 1
2	2 1 2 2
3	1 4 1 1
4	1 1 3 2
5	1 2 3 1
6	1 1 1 4
7	1 3 1 2
8	1 2 1 3
9	3 1 1 2



(cont'd next page)

So the number 2009 would show up like this:



For use in patterning, I disregarded many of the conventional uses of the code. I simply adopted the patterns for each digit, as I wished to use them. I also discovered alpha formatting, and found that **THOEM** created a pleasing pattern that I used for the Christmas towels I sold at the recent Guild Sale. I encourage you to investigate.

by *Ruth Thoem*

## Why No Nuts?



### Guidelines for Anaphylaxis Allergies:

Why do we have signs all around the Art Centre asking for no nut products?

Allergies to nut products are on the increase. And they are potentially fatal.

Increasingly, more and more children who attend art classes at the Centre are cited as having an Anaphylactic, or serious/life threatening allergic condition. The most common source is food, with nuts being the most prevalent. For some people, trace elements of nut oils left on furniture or door handles are enough to trigger a reaction, they are not safe by just avoiding food products. All kinds of nuts (of the food variety) are equally unwelcome.

### Symptoms of Anaphylactic shock?

If a person with Anaphylaxis comes into contact with even a trace amount, within seconds they could develop swelling, hives, *have difficulty breathing*, and lose consciousness and if not given their Epipen needle immediately, they could die. Each of the students at the Art Centre who have allergies provide an allergy alert form; they carry their own Epipens and eat only the foods they bring from home, but the best line of defense, says Anaphylactic Canada is to try and keep the allergen out of our environment.

### What can we do as a guild at the Art Centre?

The Art Centre currently is most concerned with keeping nut products out of the building during March break and Summer programs when children are coming into the building but ultimately would like to see if the facilities could be made safer year round. We can help by checking the ingredients of food products that we bring into the building. We should check recipes we make ourselves and those store bought goodies enjoyed at teatime and potlucks. If we do bring "tainted food" into the building, we need to make sure that we cleanup well and not transfer allergens to other surfaces.

### Should an anaphylactic person start showing signs of an allergic reaction:

Administer their Epipen into their thigh (hold and count to 10). Inform the Brock desk immediately. There are emergency phones outside the Mezzanine and FineArt. Pickup and it goes right to the desk. They will call 911 and say: 'Anaphylactic, BAC and studio location'. Stay with the person until trained help arrives.

If you don't know how to administer an Epipen; call the Brock desk and tell them the above. They will administer the Epipen, call 911 and the parents. A staff person will accompany them to the hospital. The Brock desk staff will fill out an incident report. There is an *Epipen available at the Brock desk.*

by *Jennifer Earle* with help from *Centre Staff*

### Chocolate Raspberry Layer Bars:

### No Nuts - No Eggs!

**Base:** 1 cup all purpose flour      ¼ cup icing sugar

½ cup butter

**Filling:** 1/3 cup raspberry jam

1 cup white chocolate chips

4 ozs cream cheese - softened

2 tbsp milk

**Topping:** 1 cup semi-sweet chocolate chips

3 tbsp butter

**Base:** preheat oven 375°F (190C). Grease a 9" square pan. Combine flour and sugar. Cut in butter until crumbly. - press firmly in the pan. Bake for 15-18 min.

Spread filling jam on warm crust. Beat cream cheese and milk in a small bowl - Melt white chocolate - and add - beat until smooth. Spread over the jam. Chill to set.

**Topping:** Melt chocolate chips and butter together - spread over filling. Chill until set.

"We cannot live only for ourselves. A thousand fibers connect us with our fellow men." Herman Melville

### Hot Websites:

#### Interweave -- Handwoven:

Beginners Corner of Handwoven. All about selvages, plain and floating! **Basics You Need To Know:** "Selvages are the bane of beginning weavers. Whenever I look over a new student's shoulder, I usually hear these words: "I know my selvages are terrible!" Or: "I haven't been worrying about my selvages!" Actually, *worrying* about selvages is not a good thing...."

[http://www.interweave.com/weave/projects\\_articles/1-08\\_BegCrnr.pdf](http://www.interweave.com/weave/projects_articles/1-08_BegCrnr.pdf)

**The Woolgatherers Ltd.**, Sara von Tresckow.

<http://www.woolgatherers.com/index.htm>

Simple Temple to make:

<http://www.woolgatherers.com/id105.htm>

#### Judie's Weaving Notes: Judie Eatough :

Don't miss this! She has things you never even heard of, and you suddenly find you would like to use!

<http://weavenotes.net/>

**Mary Meigs Atwater Guild** - interesting - it's another 'don't miss' site. Lots of 'goodies' in here!

<http://www.mmawg.org/index.htm>

**On-Line Digital Archive of Documents on Weaving and Related Topics:** material on weaving, basketry, lace, and related subjects. This is a good one! Patterns, patterns galore; and instructions too.

<http://www.cs.arizona.edu/patterns/weaving/index.html>

**Wikipedia:** the free encyclopedia that anyone can edit. 2,678,560 articles in English

[http://en.wikipedia.org/wiki/Main\\_Page](http://en.wikipedia.org/wiki/Main_Page)

**Janice Zindel, Shuttle Works Studio:** Handwovens and Hand-Crafted Socks.

**Socks Gone Astray:** Amusing (frustrating) story!

<http://www.shuttleworksstudio.blogspot.com/>

**Elann:** Yarns; B.C.: I know I put this on before, but this is for you knitters especially. There is a lot of FREE patterns, of all kinds. Have Fun!

<http://www.elann.com/frames.asp>

**Local Ontario farmer!** Our goal is to place as much of our homegrown fibres into the hands of Ontario spinners, weavers and knitters.

We have a wonderful supply of lovely skirted Shetland fleeces (11 natural colours), rovings and yarns available, as well as rare Shetland X silk yarns (processed in Ontario) Carole Precious, Shepherdess at Chassagne, RR2 Puslinch, ON

<http://www.chassagne.ca>

**Association of Northwest Weavers' Guilds (ANWG).** ANWG is organization supporting the Fiber Arts in the northwest US and western Canada.

**"Weaving Waves of Color": May 28-31, 2009.** Post-conference Workshops June 1-3, 2009

<http://www.anwg2009.org/?ANWG>  
<http://www.northwestweavers.org/>

### Burlington Handweavers and Spinners 2009 Executive

<b>President:</b>	Joyce Newman
<b>Vice-Pres:</b>	
<b>Past-Pres:</b>	Lois Wyndham
<b>Treasurer:</b>	Eleanor Roberts
<b>Assist:</b>	Susan Turnbull
<b>Secretary:</b>	Pat Hood
<b>Assist:</b>	Fran Boisvert
<b>Programs:</b>	Rosemarie Anich-Erickson
<b>Assist:</b>	Laura Marotta
<b>Display:</b>	Lesley French
<b>Assist:</b>	Margaret Burns
<b>Sales:</b>	Chung-Ja Jackson
<b>Assist:</b>	Susan Turnbull
<b>Librarian, Co -Chairs:</b>	Jennifer Earle Ruthe Stowe (Emeritus)
<b>Looms:</b>	Lucy Slykerman
<b>Assist:</b>	Willa McCaughan
<b>Membership:</b>	Lucy Slykerman
<b>Assist:</b>	Barbara Reid
<b>Social:</b>	Mary Wesko
<b>Assist:</b>	Gisela Risse
<b>Flowers:</b>	Freda Vietch
<b>Assist:</b>	Joanne Van Der Linden
<b>Newsletter Editors:</b>	Ruth Thoem Jennifer Earle Ruthe Stowe
<b>Juried Show:</b>	Diane Woods Jo Holden